



The Lenox Cremation Process

Lenox Cremation Services (LCS) is in Casco Twp, MI on Gratiot Ave. just southeast of downtown Richmond. It is ran by a small family business that has been servicing the community for generations. LCS is a stand-alone building that provides a private, personal touch to the cremation process. The building's light grey exterior, large elegant windows and soft interior also provide a tranquil, welcoming atmosphere for families.

The Facility

Family Suite – A comfortable space with couches and water cooler for families to visit and wait for their service to begin. If any family members do not plan on witnessing, they can wait in this suite.

Committal Suite – A viewing room that can seat 6 people with additional standing space for 10. It can be used for services and/or witnessing the cremation.

Restrooms for all visitors

Work Space – A safeguarded access only area where the cremation will take place. Only Lenox Staff and Funeral Directors will have access to this area.



Services

Committal Service

A 30-minute service conducted by a religious/secular celebrant or family member of choice that provides family members with a final viewing of the casket before the cremation. A service usually consists of an introduction, thoughts of deceased, and a prayer (if appropriate).

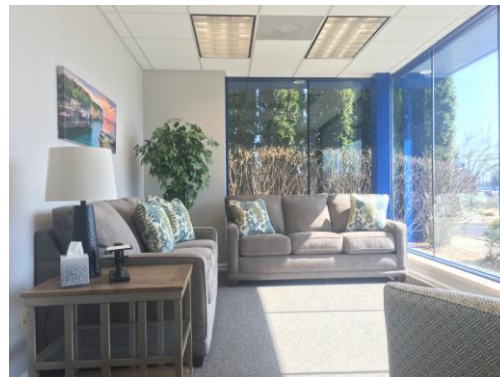
Cremation Witnessing

A viewing of the casket being placed into the cremator through a window in the committal suite.

The above services must be coordinated by a Funeral Director and advanced notice is required.

Direct Cremation

A cremation of the deceased without any family involvement at the crematorium.



The Cremation Process

Trained technicians will carry out the cremation from start to finish in a well-equipped environment for the entire process.

- 1) The deceased are either picked up or dropped off to the Crematorium by a licensed professional.
- 2) The deceased is identified with a name card and unique ID number upon arrival to the facility and it stays with the remains until collected by the funeral director or a designated person.
- 3) The deceased is then placed into a walk-in cold storage room until cremation takes place.
- 4) At the time of cremation, the deceased is placed into the cremator in the same condition as arrival. (in no circumstances is the cremation container or casket ever to be opened by Lenox Staff)
- 5) The typical cremation of an adult person of average height and weight takes about 90-minutes.
- 6) The remains are removed from the cremator and transferred to a cooling chamber.
- 7) Once cooled, the remains are placed into a transfer container where any metal residues are removed for recycling.
- 8) The remains are then placed into the cremulator for reduction and this typically takes 10-minutes.
- 9) The cremains are then transferred into a suitable travel container and stored in a temporary deposit.
- 10) The cremains are finally picked up or dropped off to the funeral director with a certificate of cremation guaranteeing authenticity.

Contact

Please feel free to directly contact Lenox Cremation Services with any questions about the services they provide to the community. The crematorium's staff is happy to open its doors to any visitor who would like more information on the entire cremation process, as it comes at a very emotional time of the human experience.